

Traveling Tribune

VOLUME 1, ISSUE 3

JULY 7, 2009

Sherman Bros Trucking Team Transport : Sound Transportation : TCT

Oregon Taxes Go Up

Special points of interest:

- Oregon Taxes Go Up
- Got Power?
- What's all the talk about?

Inside this issue:

| | |
|----------------------------|---|
| Grounds Maintenance | 2 |
| Les Schwab Road Service | 2 |
| In Cab Distractions | 2 |
| Good Neighbor Rummage Sale | 3 |
| Birthdays/Anniversaries | 3 |
| Suggestions | 3 |
| CB Lingo | 4 |
| 2009 TDC Turn Out | 4 |

Oregon's weight-distance tax will go up as a result of a bill raising the state fuel tax.

The American Trucking Associations' State Laws Newsletter reports that Oregon's legislature has passed bill (HB 2001), which Governor Kulon-goski is expected to sign, which among other things raises the rate of the state gas and diesel taxes by 25 percent. Motor carriers aren't subject to the diesel tax in Oregon, but pay a

weight-distance tax instead. However, the rate of this tax is tied to the fuel tax rate, so it too will rise by 25 percent, to more than 16 cents a mile for a vehicle at 80,000 pounds.

Car and truck registration fees will also rise.

The Oregon Trucking Association was able to support this large increase because of certain other features in the package, explains ATA. First, the increase in the weight-

distance tax is postponed until October 2010. Second, the bill provides for almost \$1 billion of transportation projects around the state, selected from a list prepared by the trucking industry. Finally, new increased local transportation taxes in Oregon are subjected to a four-year moratorium and restrictions that continue after that.

~ Truckinginfo.com

GOT POWER?

What drains batteries????

- Inverters
- New generation Trucks 2003-2009
- Not operating & sitting in cold weather

Leaving power on in the truck, turn signals, dome lights, radios, refrigerators, microwaves, cell phone charging, map lights, night lights etc...

The new generation trucks 2003-2009 are hard on batteries because of all the bells & whistles that the trucks are equipped with. If a truck is having issues with belts or the alternator, the battery will not get its full charging power to operate effectively.

Just a reminder use your battery shut off switch on the truck, if the truck you are driving has one. This could save you from being delayed on the road and will help with avoiding any costly equipment replacements.

If anyone has any suggestions on how to preserve your battery power, please submit your comments into the shops comment box located at Sherman Brothers Maintenance facility in the shops lobby.

~Thank you



Shop Talk

Cigarette butts continue to plague the shop & office grounds at the Harrisburg facility.....

If not significantly improved, SBI Harrisburg will become a smoke free facility and any smoking will have to be done outside the gated premises.....

‘Oregon Smoke Free Workplace Law’ effective January 1, 2009

“No Smoking within 10 Feet of Entrances, Exits, Windows and Vents”



Les Schwab Road Service Procedures:

- ◇ A driver experiences on-the-road tire problems....first call is to be made to their Driver Manager
- ◇ Driver Manager’s will in turn make the determination as to whether road service and/or after hours response is necessary
- ◇ Driver Manager’s will be the ones to contact Les Schwab Road Service to give them the go ahead to dispatch a service truck
- ◇ Unless the Driver Manager instructs the driver to contact Road Service or emergency conditions exist, drivers should not be contacting Les Schwab Road Service directly



In Cab Distractions

With traffic congestion rapidly increasing, professional truck drivers must understand that their total concentration should be on the road. On average, drivers make 160 decisions for every mile traveled. A dangerous situation arises when drivers focus their attention on making these decisions, rather than keeping their focus on the road. To a professional driver, these decisions are second nature and need little, if any, thought.

Whether talking on a cell phone or playing with a pet, a driver is diverting attention from the road and they may endanger the life of the driver as well as the lives of others. It is important to remind drivers to stay focused while operating their trucks. The following are types of in-cab distractions that can cause crashes resulting in serious property damage, personal injury, or death:

Physical Physical in-cab distractions, such as eating, reading, and talking on a cell phone are all tasks that should be done while parked. The few minutes saved by grabbing lunch and eating it on the road rather than at the truck stop will not justify itself in the event of a crash. Even rear view mirrors can become a distraction. Mirror checks should be split second glances, and never a long glance.

Mental Another in-cab distraction that can be very dangerous if focused upon lies in our heads. Our minds are constantly thinking about our lives. Do not daydream or let your mind wander. If you find yourself mentally drifting, catch yourself and re-focus your attention on the road. Concentrate on the vehicles in front of you, check your following distance, scan down the road, and open the window for some fresh air are a few ways to regain your focus on the road.

Exercising Protective Driving Technique:

Avoid using electronic devices when driving

Avoid using large drink containers that block visibility when drinking

Stop at a safe area to rest when tired

Avoid daydreaming and inattention

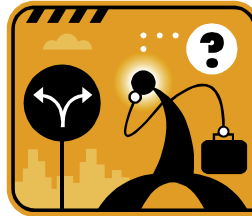
Avoid road rage

Turn off the radio when loading/unloading or in heavy traffic



Did you know?

"All (or almost all) interstates going East or West have EVEN numbers and all interstates going North or South have ODD numbers"



WELCOME
New Employees

Richard Gonzales, Micah Dulong,
 Curtis Roney, Alex Garcia, Nelson
 Ventura, Matt Maser, Darin Dol-
 lemore, "Jeanne" Irwin, Dean Hug-
 gins, Richard Ireland, Dale Figart and
 Jim Chaney

What's All The Talk About?

Ever wonder what language drivers are speaking while out on the road? It's truly one of a kind.....Here's a little trucking CB Lingo to help keep you "In the Know":

- | | |
|---------------------|---------------------------------|
| Alligator | Blown Tire In Road |
| Back off the Hammer | Slow Down |
| Bear | Police Officer |
| Bear Trap | Stationary Police w/ Radar |
| Full Grown Bear | Highway Patrol |
| County Mounty | Sheriff |
| City Kitty | City Police |
| Bulldog | Mack Truck |
| Bumper Sticker | Car too Close to Bumper |
| Cash Register | Toll Booth |
| Chicken Coup | Weigh Station |
| Comic Book | Trucker's Log Book |
| Bird Dog | Radar Detector |
| Double Nickel | 55 Miles Per Hour |
| Four Wheeler | Car |
| Greasy Side Up | Car with it's wheels in the air |
| Hammer Lane | Fast Lane |
| Diesel Cop | DOT |
| Meat Wagon | Ambulance |
| Parking Lot | Truck hauling cars |
| Taking Pictures | Police using radar |
| Travel Agent | Dispatcher |
| Yard Stick | Mile Marker |
| Wiggle Wagon | Double or Triple Trailer Truck |
| Salt Shaker | Snow Plow |
| Sesame Street | CB Channel 19 |
| Pole Cat | Skunk |



2009 Truck Driving Championships:

As most of you know, the annual OTA Super Tech & Truck Driving Championships are an excellent opportunity for everyone who participates to show off their skills and talents.

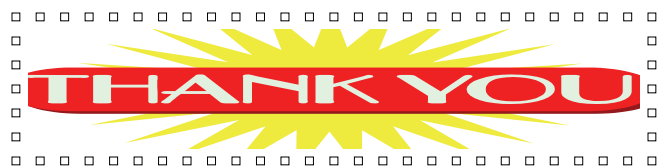
We were ecstatic to see the high volume of Sherman Bros representation this year.

Our very own Gary Garrett came in 3rd place in the Flatbed Class!! Congratulations Gary!!

Congratulations to Marli Ward for winning the raf-
 file prize of a gift certificate worth \$4,700 towards
 the IITR, truck driving school.

A big thanks to everyone who participated in this
 years competition and for all the volunteers who
 helped prior to and during the event.

S.B., Inc.'s hope is that our presence will be a
 staple in future competitions to come and will
 look forward to having even more volunteers and
 participants to help in representing at next year's
 event.



**"DID YOU KNOW THAT IF YOU'RE ON I-5,
 YOU HAVE 5% OF THE US LEFT TO THE
 WEST OF YOU, AND IF YOU'RE ON I-95, YOU
 HAVE 95% LEFT TO THE WEST OF YOU?"**